

*The Cunning Artificer's,  
Discworld<sup>®</sup> Stamp Catalogue  
Volume 1*





# Welcome to the world of Discworld Stamps

This catalogue is a brief guide to some of the first series of Discworld stamps released – with further tomes to follow as the number of available designs continues to grow. And with over 250,000 individual stamps sold so far, it shows no signs of slowing down!

There's a great deal of stamp related paraphernalia available to buy, too much to go into in this one catalogue, but if you visit [www.discworldstamps.com](http://www.discworldstamps.com), there's an online store, and one of the most vibrant forums and discussion groups dedicated to anything Discworld you will find. It's full of information supplied by collectors, for collectors both philatelic and Discworld. You can find out more about the best way to collect Discworld Stamps (LBEs<sup>1</sup>), find out just what a 'Flatalist'<sup>2</sup> really does with their time, and most importantly learn more about one of the Flatalist Mantras 'DO NOT USE STAMP HINGES!'<sup>3</sup>

<sup>1</sup> 'Little Brown Envelope' which contains a mixture of common stamps and occasionally rare or 'cancelled' stamps.

<sup>2</sup> Flatalists - the official name for Discworld Stamp Enthusiasts. <sup>3</sup> Because Stanley Howler says so.

Discworld is a registered trademark © 2005 Terry Pratchett (this is backed up by men with big sticks). All images contained within are copyright Discworld® Stamps. Bernard Pearson would like to thank all those who have worked so hard on making these stamps such a success. Colin Edwards & Alan Batley for all the printing and graphics, Isobel for all the grown up stuff, and John Pagan for designing this catalogue (with Flatalic assistance from Kiyomi Deards).

My name is Bernard Pearson...  
...Ask me about Stamps

As with everything we produce, in the beginning was the word.

The words in this case being those in Terry Pratchett's novel 'Going Postal' and it was this particular book that started us out on creating stamps. Discworld Stamps, or Cinderellas as this type of stamp is called, are produced using traditional, or in some cases downright ancient, techniques. They are designed directly from ideas suggested by Terry

Being true to 'Discworld' is just one parameter; these stamps are little gems of philatelic art because of the careful attention we give to every part of their production. In consequence they are now regarded as being amongst the foremost stamps of their category by both philatelic collectors and Discworld fans.

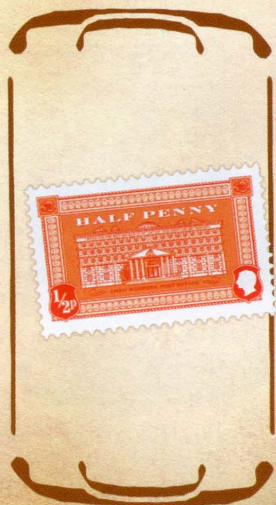
[www.discworldstamps.com](http://www.discworldstamps.com)

## Half Penny Red

Pimpernel Orange on a white face.  
Patrician in profile opposite denomination.

Central Design of the original Post Office before restoration. Some subject to in-line perforations (coarse cut). On the bottom is written Ankh Morpork Post Office and on the top of the building under the roof, above the windows in very tiny print is 'Neither Rain Nor Snow Nor Glom of Nit Can Stay These Mesengers Abot Their Duty' as it was written before the letters were returned but without the spaces, presumably so that there was room to fit all those words on such a small stamp.

Released: July 2004. Size 33mm x 20mm.  
Available to buy individually, or in sheets of 20.



## Penny Patrician

The Penny Patrician is mostly black showing the head of Lord Vetinari in profile. Has a fine burelage to the background. Some subject to inline perforations (coarse cut- only found in LBE). There have been several variations on the Penny Patrician which can only be found in LBEs, the Eminence Gris with greyer hair, and the Penny Civic Black with Lord Vetinari's initials. Check your Penny Civics carefully because it could be a rare Civic sport with a broken angled V.

Released: July 2004. Size 20mm x 25mm.  
Available to buy individually, or in sheets of 20.





## 2p Ankh Purple

Ripe plum purple overall. Central motif of Ankh-Morpork Coat of Arms. Significant numeral bottom centre. Some subject to in-line perforations (coarse cut). The banner reads *Quanti Canicula Ille In Fenestra* and the small banner reads *"Merus In Pectum et In Aquam"*. This was the second stamp designed.

The Ankh-Morpork Coat of Arms was originally created by Terry Pratchett and Stephen Briggs, and is now to be found, amongst other places, on the official Town sign of Wincanton in Somerset.

Released: July 2004. Size 20mm x 35mm.  
Available to buy individually, or in sheets of 20.



## 5p Morporkian Blue

Dual Blue tints over a white ground with central numeral at top. Under which is Morporkia girdled, fork in the ascent. Some subject to in-line perforations (coarse cut- found only in LBE). This stamp was inspired by an old stamp design of the 1930's, and was designed by Bernard Pearson & Colin Edwards. The central element of Morporkia was drawn by Alan Batley from a detailed description from Terry Pratchett

Released: July 2004. Size 35mm x 40mm.  
Available to buy individually, or in sheets of 20.



## 10p Morporkian Green

Brassica tints over a white ground with central numeral at top. Under which is Morporkia girdled, fork in the ascent. Some subject to in-line perforations (coarse cut- found only in LBE). This stamp was inspired by an old stamp design of the 1930's, and was designed by Bernard Pearson & Colin Edwards. The central element of Morporkia was drawn by Alan Batley from a detailed description from Terry Pratchett.

Released: July 2004. Size 35mm x 40mm.  
Available to buy individually, or in sheets of 20.



## £1 Tower Of Art

Depicting the Unseen University Tower of Art amid its scholastic environment. A most unusual stamp with reports of transfiguration within the engraving. All are subject to in-line perforations (coarse cut). There are five variations on the regular Tower of Art: the Falling Man, the Falling Man with Flat birds (horizontal instead of tilted), Splashing Man, the Splashing Man with different shaped splash and extra selvage, and the Reversed Weathervane. There are also some stamps with extra perforations as these are all hand perforated. Variations are found only in LBEs.

Released: July 2004. Size 30mm x 95mm.  
Available to buy individually, but not as sheets.





## 3p Assassin's Stamp

Exclusively hand perforated. A rich Blue & Purple on a white body paper. Initially 1500 were produced ungummed. For THIS STAMP ONLY Smooth Back = Ungummed (Note this is the only stamp produced ungummed!) Considered to be much safer than the Thrup'ny Dreadful (Assassin's Guild Postage Paid stamp available only in LBEs and comes bagged due to some unfortunate incidents), but we urge caution. This is the Assassin's Guild!

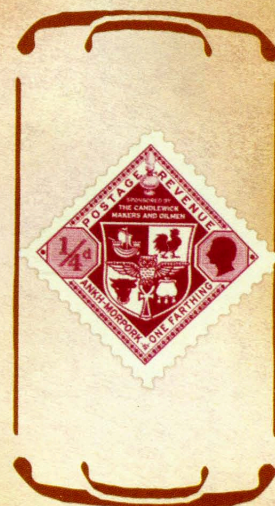


Released: January 2005. Size 35mm x 38mm.  
Available to buy individually, or in sheets of 28.

## Farthing Stamp

The Merchants were amongst the first to realize that Stamps were Money. Therefore each branch of the guild sponsored a stamp which became a means of payment in its own right.

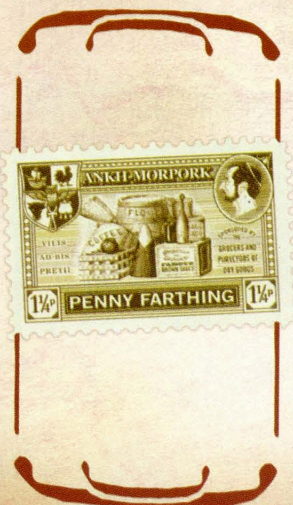
Sponsored by the Candlewick makers and Oil Men, this stamp is maroon on a cream body in the shape of a diamond and exclusively hand perforated. It features the guild shield with ship, cockerel, bull's head and purse centered by an owl on an Ankh. The Farthing Stamp has one sport per sheet of stamps in which the sails on the ship are facing the same direction but the body of the ship is reversed.



Released: February 2005. Size 25mm x 25mm.  
Available to buy individually, or in sheets of 70.

## Penny Farthing

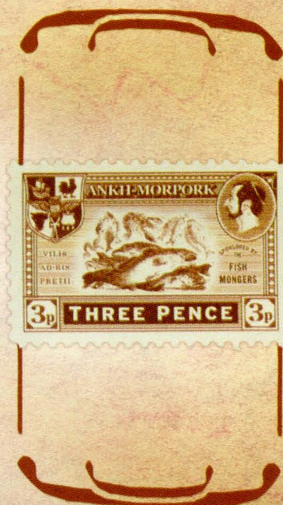
Sponsored by the Grocers and Dry goods Merchants the stamp features boxes of dry goods and groceries in an amber on a cream body. It also features the phrase 'vilis ad bis pretii'. The Penny Farthing stamp has one sport per sheet in which the 'p' is missing from the price boxes in the lower right and left hand corners.



Released: February 2005. Size 25mm x 37mm.  
Available to buy individually, or in sheets of 49.

## 3 Penny Stamp

Sponsored by the Fish Mongers depicting fish and other sea creatures in an ox blood brown ink on a cream body. The Three Penny stamp has one sport per sheet in which there is no space between the words 'THREEPENCE'.



Released: February 2005. Size 25mm x 37mm.  
Available to buy individually, or in sheets of 49.



## 50 Penny Stamp

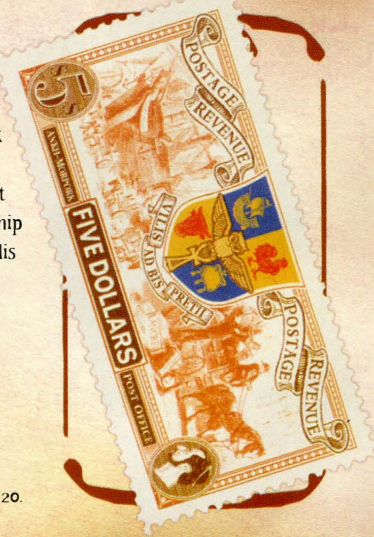
Sponsored by the Butchers and Tripes Merchants this stamp is Prussian Green on a cream body depicting meat and sausages. The Fifty Penny stamp has one sport per sheet in which the top of the o in "Dollar" is missing so it actually reads "Dullar".



Released: February 2005. Size 25mm x 37mm.  
Available to buy individually, or in sheets of 49.

## \$5 Merchant's Guild Special

In postal terms it will carry a small package to Genua and back, and can therefore be regarded as a de-facto promissory note against Guild Funds. Brown, Mustard Yellow, Blue, and Brick Red on a Cream background bring this intricate stamp to life. Appropriately it depicts wares being unloaded from a ship as well as the guild crest and motto 'Vilis Ad Bis Pretii'.



Released: April 2005. Size 32mm x 62mm.  
Available to buy individually, or in sheets of 20.

## 1/4p Red Cabbage Stamp

Purple and yellow tints over a cream body this stamp depicts a cabbage and was released for the Twoshirts Maserating Cabbage Festival. They are all hand perforated in Wincanton. Twoshirts is where Tiffany stops in Terry Pratchett's 'A Hat Full of Sky'.



Released: April 2005. Size 20mm x 24mm.  
Available to buy individually, or in sheets of 80.

## 1/2p Green Cabbage Stamp

Brassica and yellow tints over a cream body this stamp depicts a cabbage and was released for the Twoshirts Maserating Cabbage Festival. They are all hand perforated in Wincanton. You may recognize Twoshirts from Terry Pratchett's 'A Hat Full of Sky'.



Released: April 2005. Size 20mm x 24mm.  
Available to buy individually, or in sheets of 80.



## 2p Macerating Festival

Brown tints over a cream body, this stamp depicts two men hard at work during the Twoshirts Macerating Cabbage Festival. All of these stamps are hand perforated in Wincanton. There is a sport (only available in LBE) and several slight variations of this stamp. The sport has the men's faces reversed with the eyes and moustaches being the most obvious differences. There is also a tendency in the 2p print runs for 'white spots' to appear on the hand, trousers, and various other locations. Twoshirts is where Tiffany stops in Terry Pratchett's 'A Hat Full of Sky'.

Released: April 2005. Size 32mm x 32mm.  
Available to buy individually, or in sheets of 35.



## Leshp 1 Dollar

Originally designed by Bernard Pearson as a fundraiser for 'Mental Health Media' as part of the Rockall First Day cover the stamps show the Discworld island of Leshp. This island features in the Discworld novel 'Jingo' by Terry Pratchett and the stamp was so popular it was made available for general sale singly and in sheets.

Released: June 2005. Size 29mm x 34mm.  
Available to buy individually, or in sheets of 30.



## The Little Brown Envelope of assorted Discworld® Cinderella stamps

The Little Brown Envelopes (referred to by Collectors as 'LBEs' - mainly because it's easier to say and a lot easier to type) are the most common way of purchasing and collecting Discworld Stamps.

Contained within each envelope is a random selection of stamps from the many designs available. These could be just single stamps, several attached together, franked (or 'cancelled') stamps, and other rarities such as the 'sport' Tower of Art stamps with the Falling Man, the 'Eminence Gris' Penny Civic, or even the very, very, rare \$5 Blue Triangle or Thruppin'y Dreadful.

The actual design of the LBE has changed many times since its launch, with many editions carrying a White Label instead of the printed version seen here. Many collectors like to hunt down these variations.

Released: July 2004 - and regularly since in varying designs.  
Size 105mm x 105mm.







*Sender: The Cunning Artificer, 41 High Street, Wincanton, Somerset BA9 9JU. Tel: 01963 824686*