

Issued in the Year of the Complicated Monkey

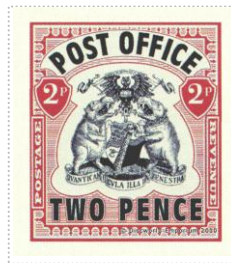
Red on Cream Field Crenulated Frame bounding Two Hippos Royales Baillant Left Enchaîne, Right Couronne au Cou surmounted by Ankh Symbol supporting Shield with Book and Wizard's Hat and Owl Black Supported by Scroll with Motto QVANTI CANI CULA ILLE IN FENESTRA Chief Curved Scroll with POST OFFICE Black Bordered by Curved Shield with 2p Powder Blue on Red Supported by POSTAGE Dexter and REVENUE Dexter Base TWO PENCE Black on Powder Blue.

Stamp Name: Ankh Two Pence Red	Common	SHS AM0240Aw
Region: Ankh-Morpork	Availability: Unlimited Availability	
Perforation: Wincanton 10/2cm/2cm	Width/Height: 30 by 34 mm	
Price: 45p	Release Date: 28 Jan 2011	
Stamp Name: Ankh Two Pence Red Postage	Sport	SHS AM0240Bw
Region: Ankh-Morpork	Availability: Sport found on sheet	
Perforation: Wincanton 10/2cm/2cm	Width/Height: 30 by 34 mm	
Price:	Release Date: 28 Jan 2011	

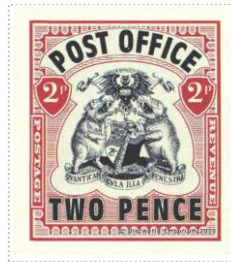
The word Postage on the left runs from top to bottom.

Stamp Name: Ankh Two Pence Red Linsley	Sport	SHS AM0240Cw
Region: Ankh-Morpork	Availability: Sport found on sheet	
Perforation: Wincanton 10/2cm/2cm	Width/Height: 30 by 34 mm	
Price:	Release Date: 28 Jan 2011	

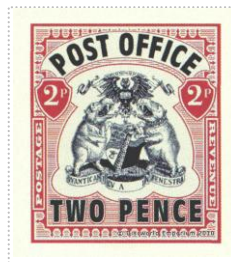
The letter L in CULA and the word ILLE are missing from the banner.
 This was an unintended sport and results from the fact Bernard forgot he had created it.
 Discovered by Linsley (Skaven)



SHS0240Aw



SHS0240Bw



SHS0240Cw